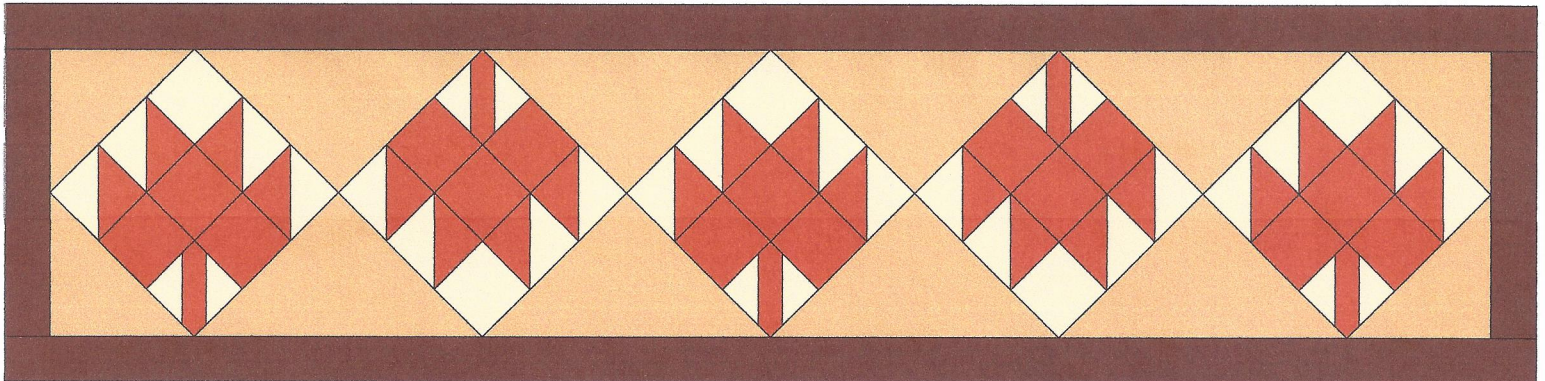


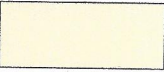

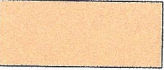

Block of the Month July - September

The Block of the Month Program for 2019/20 will feature 4 seasonal table runners. The project for July - September is a Maple Leaf Table Runner with 5 on-point maple leaves with setting triangles and a 2 inch border.

Maple Leaf Table Runner

Overall Size: 67.64 by 16.73 inches

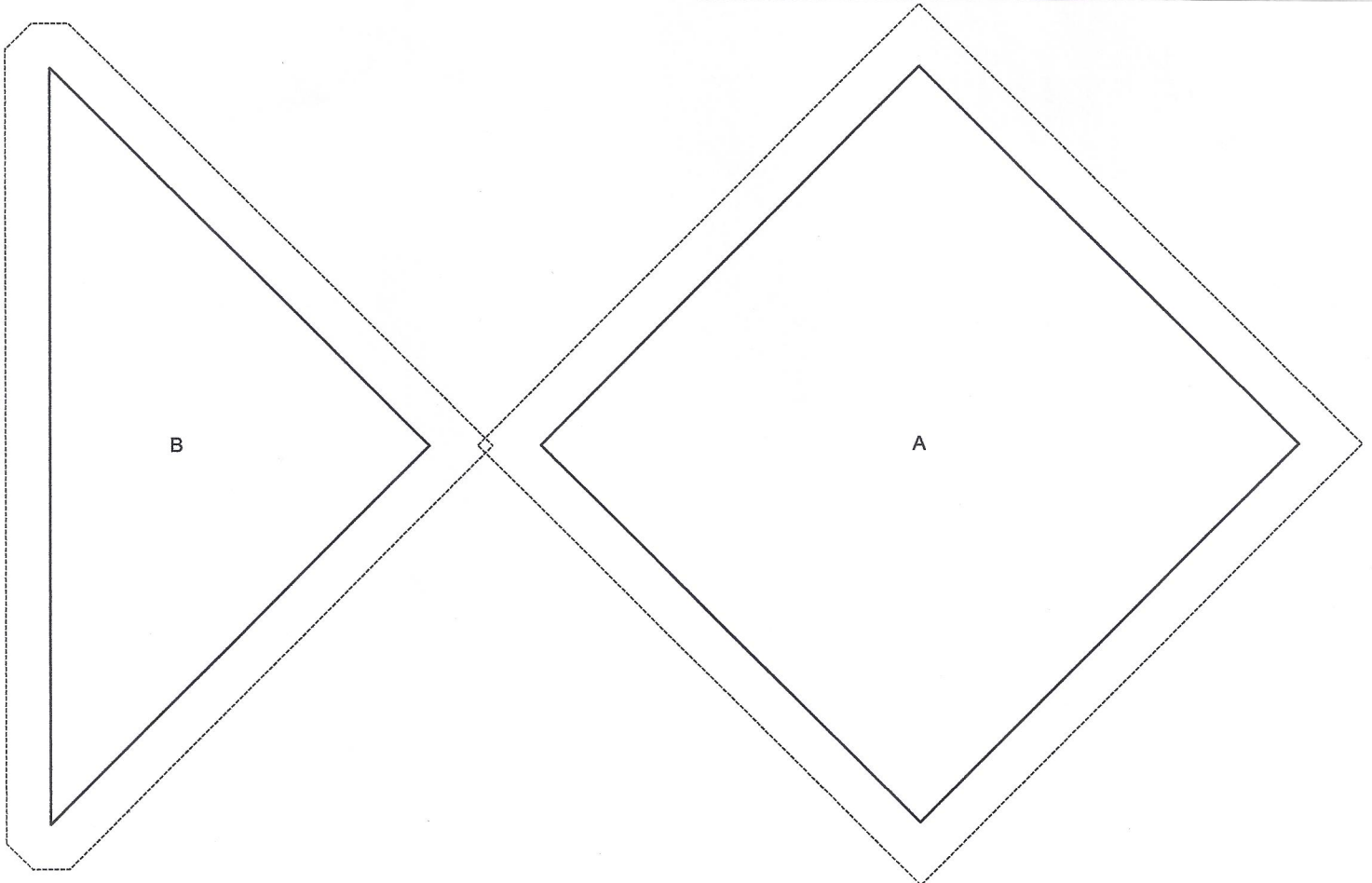
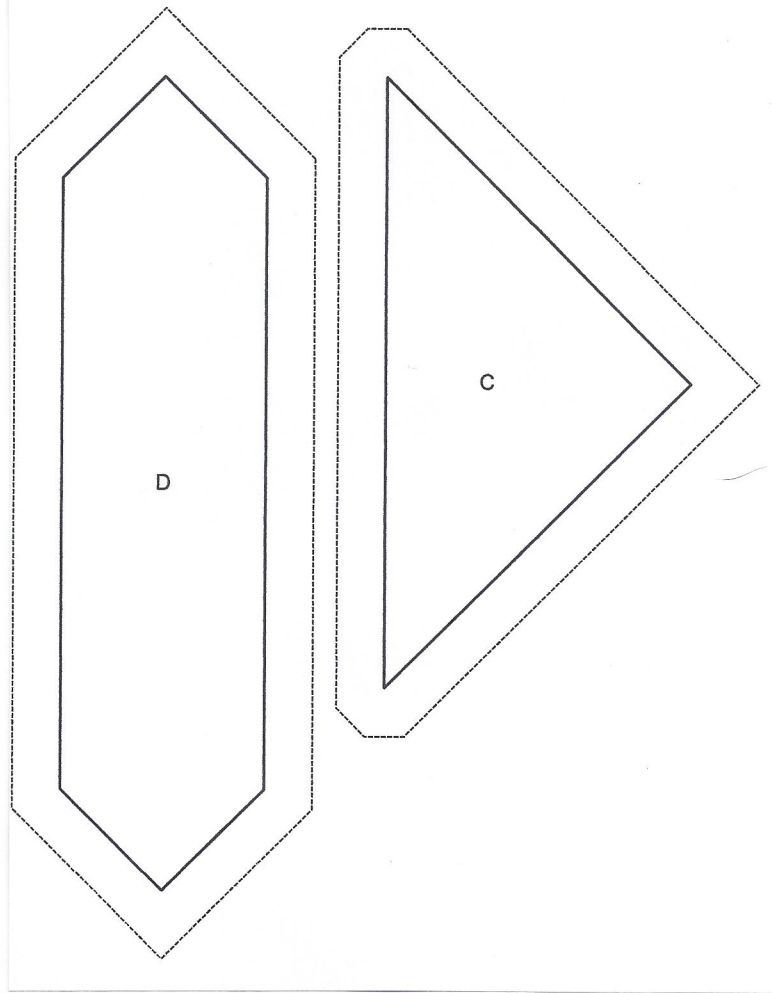
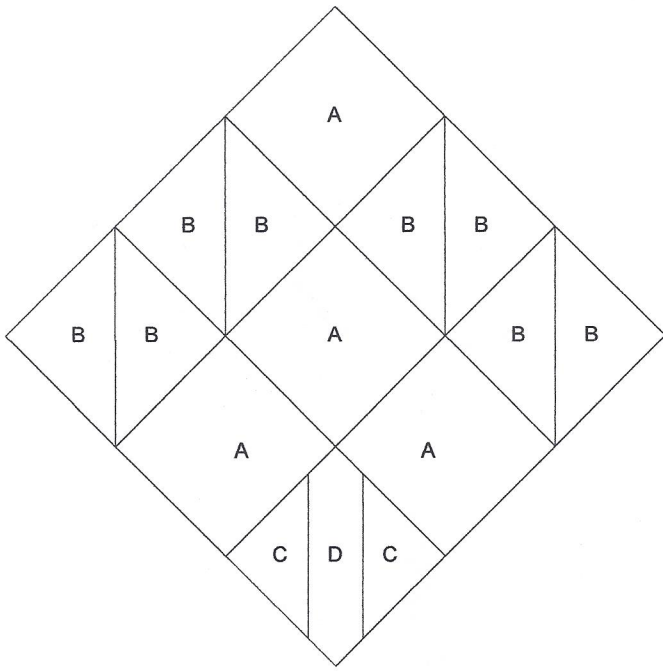


Fabric width 44-45 inches	Number of patches	Yardage estimate	Fabric name SKU
	35	3/8	Solid
	40	3/8	Solid
	12	7/8	Solid
	4	# 3/8	Solid

The estimate for this fabric assumes that long strips ARE pieced.

Maple Leaf

Key Block (27/100 actual size)



Corner Triangles

6.36 inch wide (approx. 6 3/8 in)

6.36 inch high (approx. 6 3/8 in)



A

Setting Triangles

12.73 inch wide (approx. 12 3/4 in)

6.365 inch high (approx. 6 3/8 in)

A



